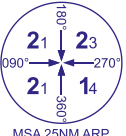
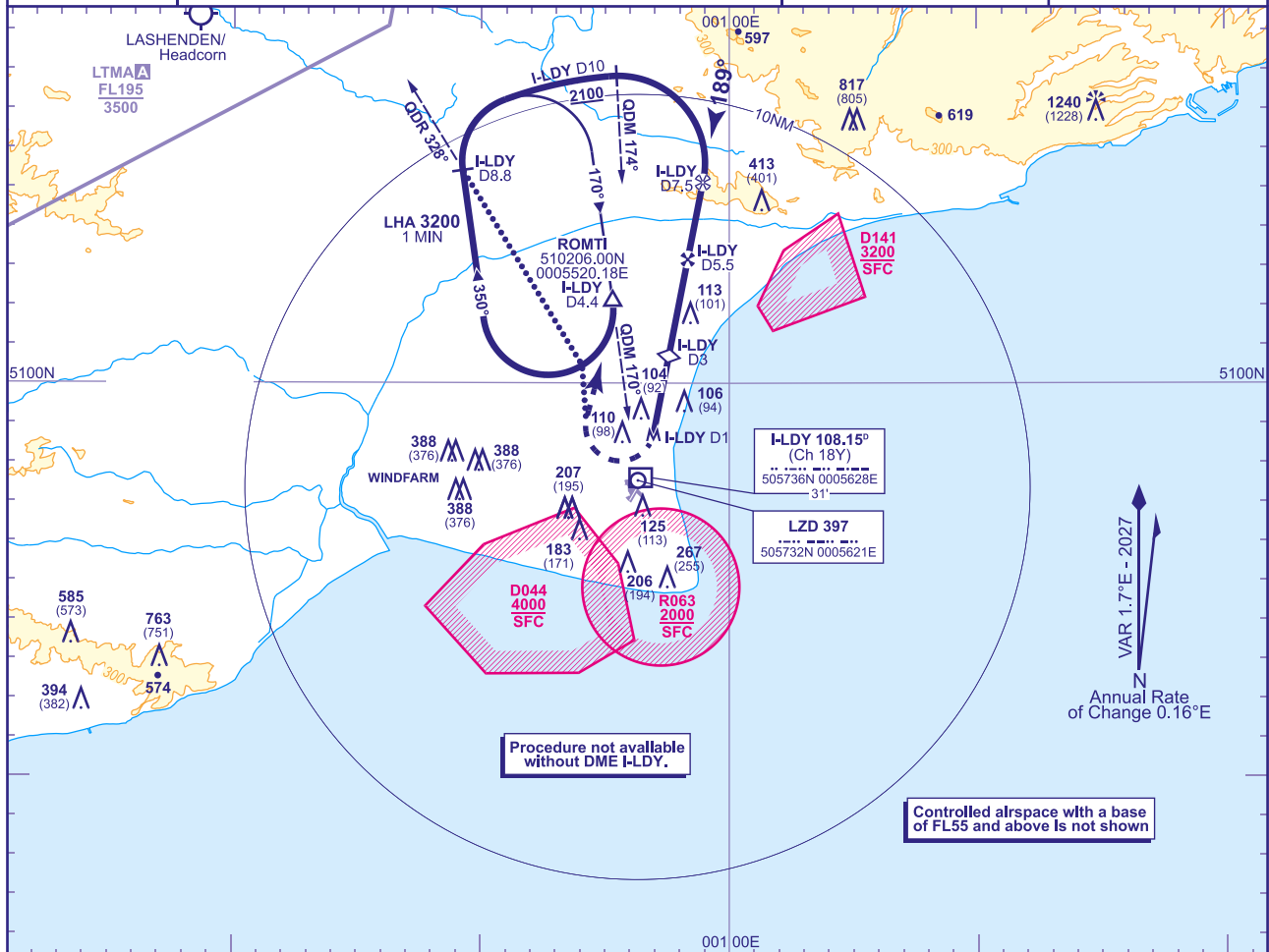


## INSTRUMENT APPROACH CHART - ICAO

LYDD  
NDB(L) DME  
RWY 21  
(ACFT CAT A,B)

	APP 120.705	LYDD APPROACH	AD ELEVATION 13
	TWR 119.380	LYDD TOWER	THR ELEVATION 12
	ATIS 129.230	LYDD INFORMATION	OBSTACLE ELEVATION 1240 AMSL (1228) (ABOVE THR)
			BEARINGS ARE MAGNETIC
			TRANSITION ALTITUDE 6000



## RECOMMENDED PROFILE Gradient 6.10%, 371FT/NM

NM	5	4	3 (SDF)	2	1
ALT(HGT)	1910(1898)	1540(1528)	1170(1158)	800(788)	430(418)

## MAPt I-LDY DME 1

Turn right as soon as possible climbing to 3200 to join the hold at ROMTI. Continue climb in the holding pattern as required or as directed by ATC.

NDB(L) LZD

ROMTI  
3200(3188)

350°

2100(2088)

510(498)

880(868)

DME I-LDY zero ranged to THR RWY 21

Aircraft Category		A	B	Rate of descent	G/S KT	160	140	120	100	80
OCA (OCH)	Procedure	420(408)	520(508)		FT/MIN	990	860	740	620	490
VM(C)OCA (OCH AAL)	Total Area	510(497)	N/A							
	West of RWY 03/21	N/A	510(497)							

**ALTERNATIVE PROCEDURE (Subject to ATC approval)** At the MAPt turn right onto track 359°, climbing to 2100(2088), to intercept NDB(L) LZD QDR 328° outbound. At I-LDY DME 8.8 turn right to intercept the DME 10 arc clockwise at 2100(2088), then continue as for basic procedure.

**NOTE** 1 When joining the hold at 3200 pilots are to remain clear of EGD044 to the south of the hold when active up to 4000.

2 A/C to remain clear of EGD141 on approach and EGD044 on MAP.

3 FAT is offset 22° from RWY 21 C/L.

CHANGE (1/26): MAG VAR. MAG TRACKS.

AERO INFO DATE 10 NOV 25

AD 2-EGMD-8-5